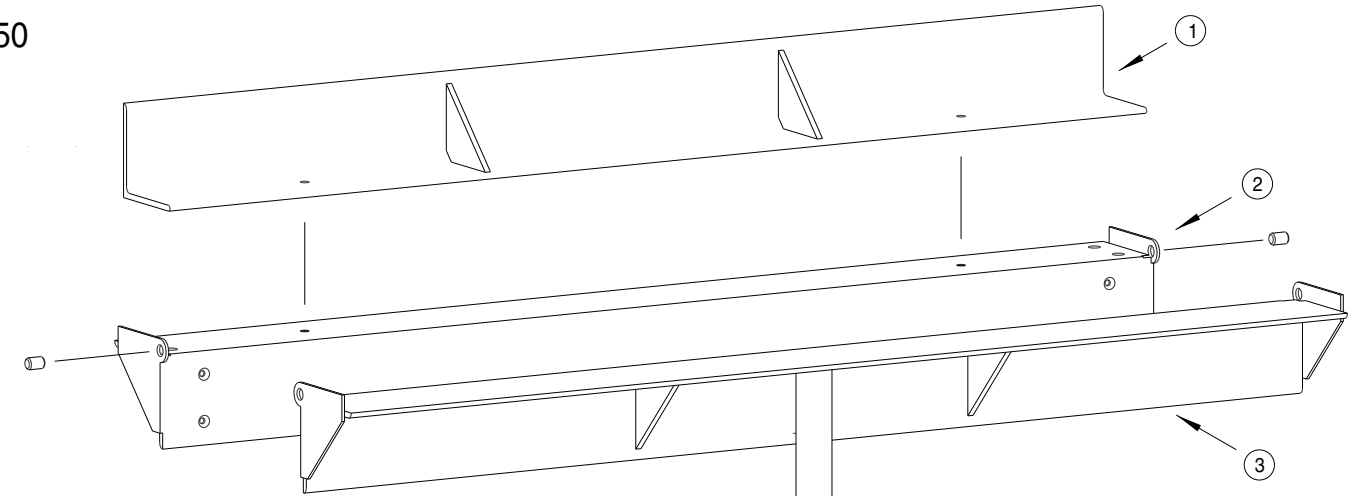
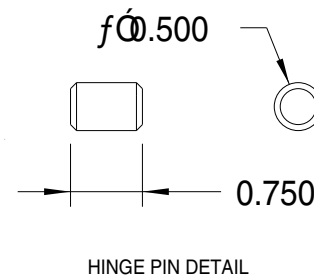
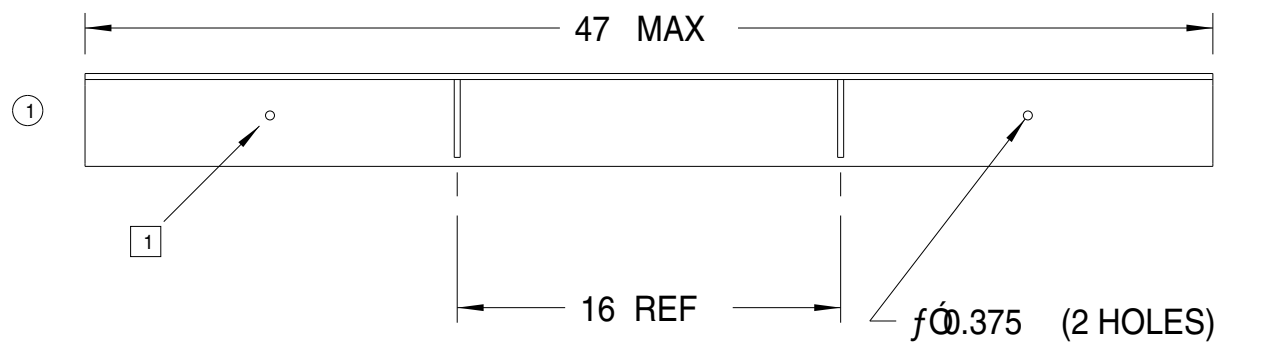


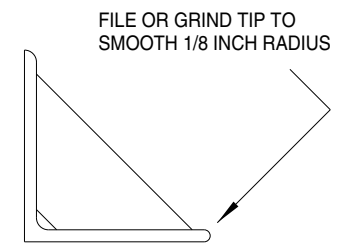
B - BRAKE-1

SYM	REVISIONS	APPROVED	DATE

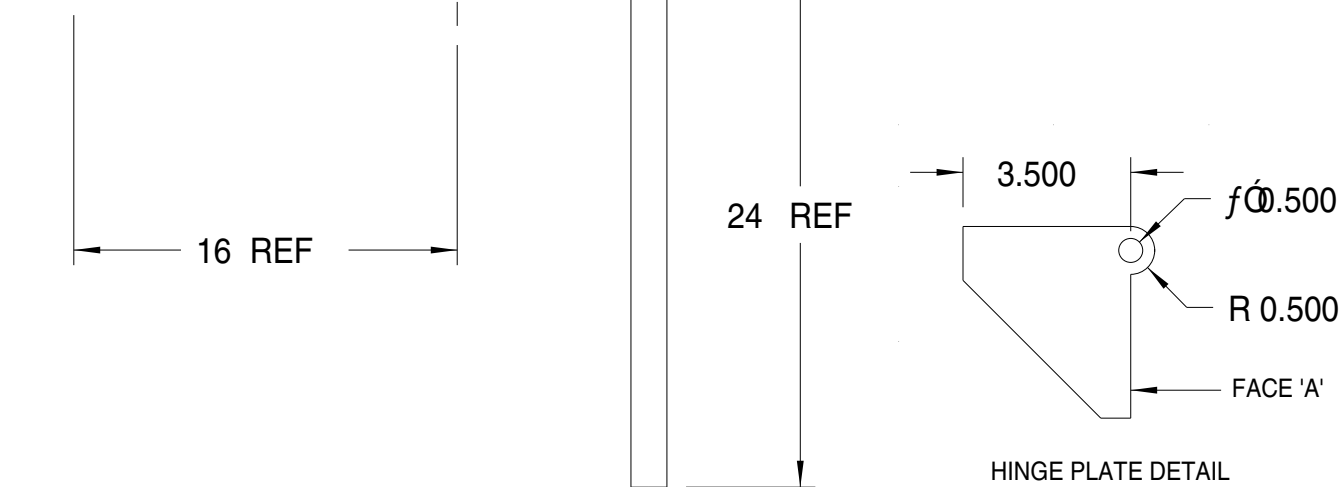
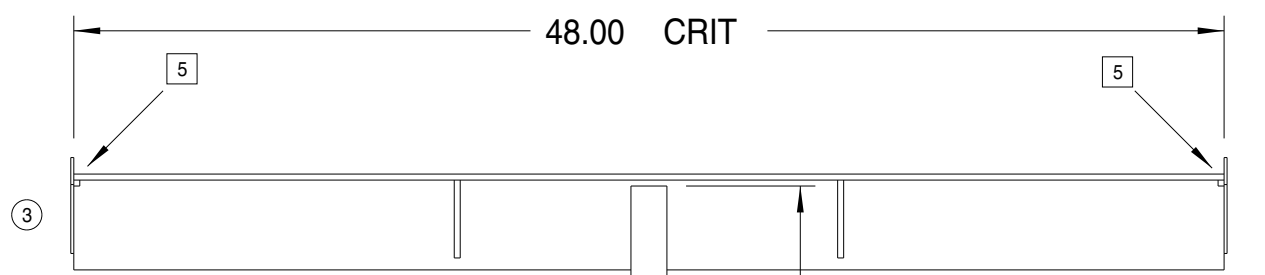
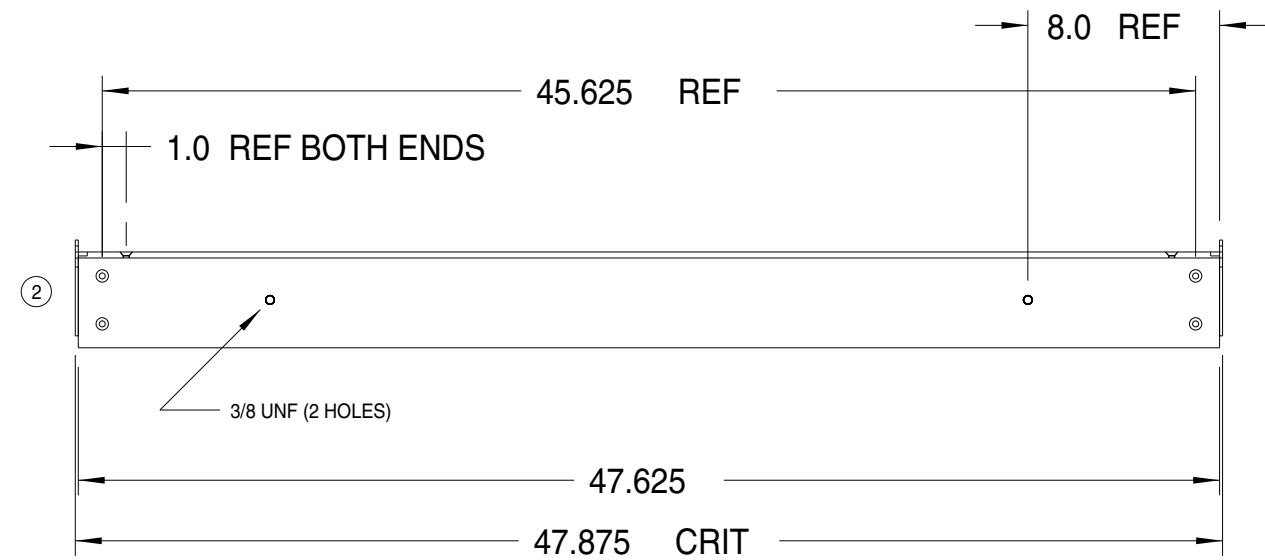


NOTES

- MATCH-DRILL HOLES THAT MOUNT RADIUS TO BASE.
- BASE AND HANDLE: MAY NEED TO GRIND OUTSIDE CORNER OF ANGLE IRON TO PROVIDE CLEARANCE FOR HINGE PINS.
- HINGE FACE 'A'
 BASE: CUT OR GRIND TO CLEAR ADJACENT FACE ON HANDLE.
 HANDLE: CUT OR GRIND TO CLEAR ADJACENT FACE ON BASE.
- ADDITIONAL MATERIAL:
 1/4 UNF OR UNC BOLTS, NUTS, AND WASHERS (8) (LENGTH TO SUIT)
 3/8 UNF X 1/2 INCH BOLTS AND WASHER (2)
- GRIND OR NOTCH AS REQUIRED TO CLEAR BASE.
- ASSEMBLE AND WELD HINGES SUCH THAT HINGE AXIS IS COLINEAR WITH CENTER OF BEND RADIUS. REFER TO RADIUS DETAIL.



RADIUS DETAIL



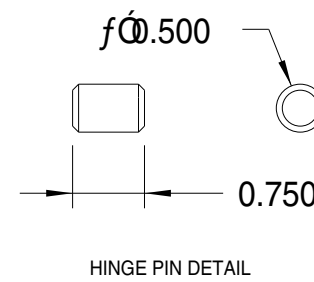
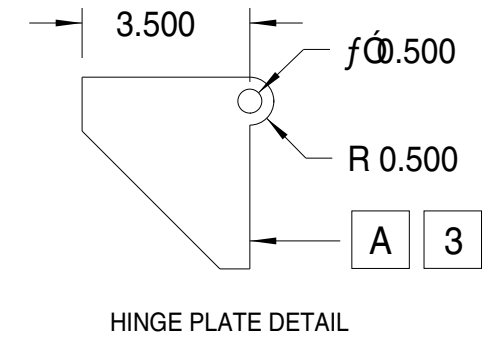
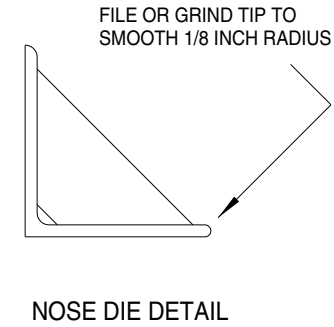
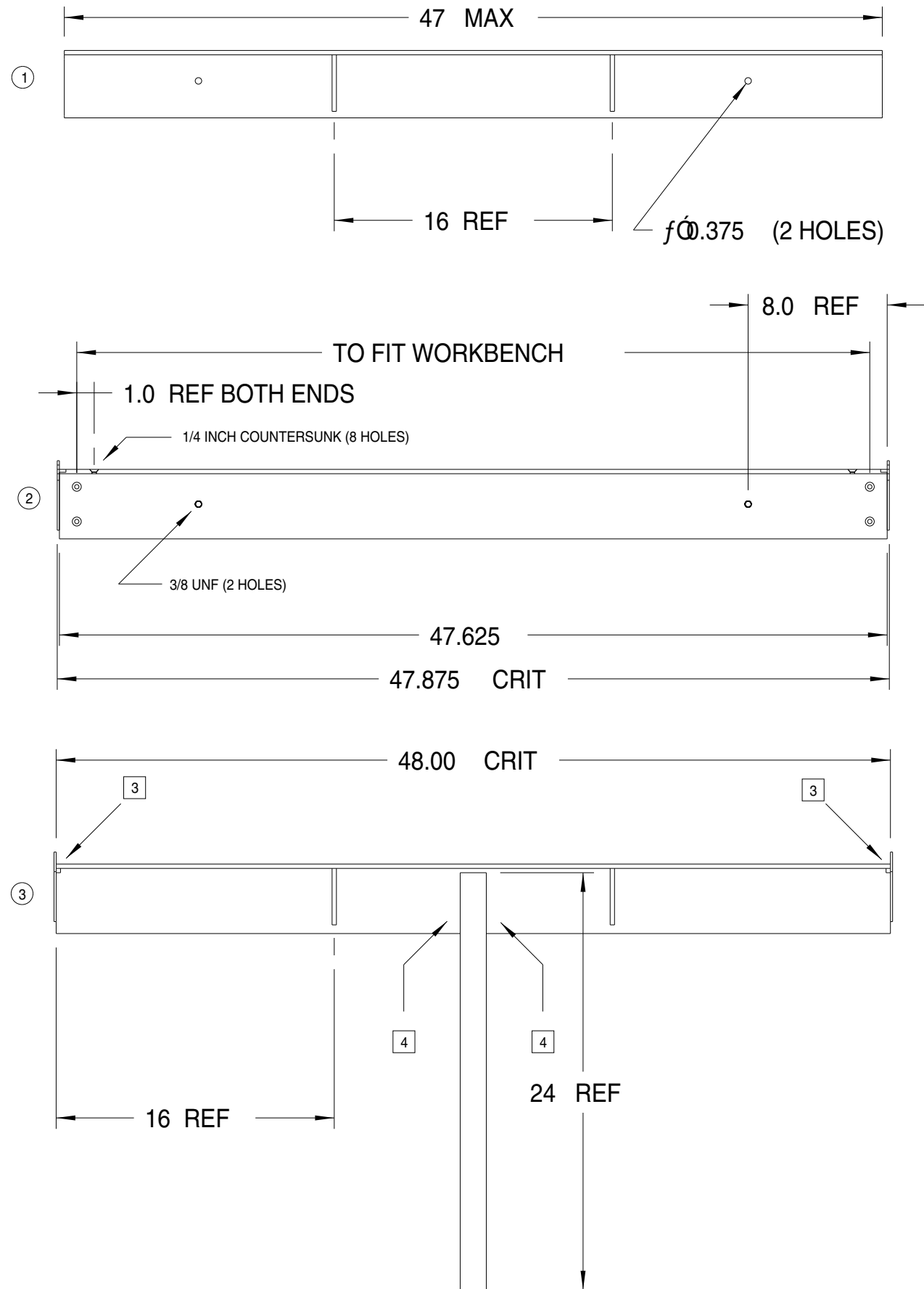
HINGE PLATE DETAIL

ITEM	QTY.	PART/MATERIAL-DESCRIPTION	MAT'L-SPEC.
3		HANDLE	ANGLE IRON; PLATE; 1.5 INCH TUBING
2		BASE	ANGLE IRON; 1/8 INCH PLATE
1		RADIUS	4 INCH ANGLE IRON

T MCHENRY DRAWN BY	98/06/30 DATE	BENDING BRAKE	WESTERN CANADA RVATOR
K HOSHOWSKI ENGINEER/CHECKER			PART NO.
RELEASE TO PROD.		SCALE APPROX.	SHEET 1 OF 1
FILENAME			B - BRAKE-1

B - BRAKE-1

SYM	REVISIONS	APPROVED	DATE



NOTES

1. BASE AND LEAF: MAY NEED TO GRIND OUTSIDE CORNER OF ANGLE IRON TO PROVIDE CLEARANCE FOR HINGE PINS.
2. HINGE FACE 'A'
 BASE: CUT OR GRIND TO CLEAR ADJACENT FACE ON LEAF.
 LEAF: CUT OR GRIND TO CLEAR ADJACENT FACE ON BASE.
3. GRIND OR NOTCH AS REQUIRED TO CLEAR BASE.
4. WELD HANDLE TO LEAF.

3	HANDLE	ANGLE IRON; PLATE; 1.5 INCH TUBING	
2	BASE	ANGLE IRON; 1/8 INCH PLATE	
1	RADIUS	4 INCH ANGLE IRON	
ITEM	QTY.	PART/MATERIAL-DESCRIPTION	MAT'L-SPEC.
T MCHENRY DRAWN BY		98/06/30 DATE	WESTERN CANADA RVATOR
K HOSHOWSKI ORIGINAL DESIGN BY			
RELEASE TO PROD.		TITLE	PART NO.
FILENAME		SCALE APPROX.	SHEET 2 OF 2
			B - SM-BRAKE